

expandachem

Assembly Instructions



General assembly instructions

- Read instructions thoroughly before commencing assembly
- For best results assemble on level, solid ground or it may affect alignment of the wall and ceiling panels
- On initial assembly, hand tighten all nuts and bolts then once full assembly has been completed, tighten again with socket/spanner
- Keep all components and packaging if you plan to demount, move and reassemble in new location

The tools you will need

- 13mm spanner
- 19mm spanner
- Socket set including 13mm and 19mm sockets
- Screw driver

Safety notes

Please review all safety implications before commencing installation including suitability of desired location, local hazards, access and personnel involved in assembly. If in any doubt refer to your company's Health & Safety officer or seek professional advice. Due care should be taken when lifting, assembling and demounting the unit.

General notes after assembly

- Once assembled, the unit can be lifted and re-positioned using a fork lift or crane
- For demounting and relocating in flat-pack condition, using the original packaging is recommended

Terms explained

- Capture nuts – This refers to nuts that are pre-attached to the component.
 - Chassis – The main floor component
 - Hand tighten – Tightened by hand so secure to hold in place but loose enough to allow for small movement
 - Demounted – When the unit is disassembled and returned to its original flat-packed state
-

STEP 1

Unscrew the 4 travelling bolts using a 19mm socket spanner.



STEP 2

Lift off the roof section and place away from chassis so you have room to work.



STEP 3

Remove the components and panels:

- Fixings pack
- Floor grates
- Corner assembly sections
- Side panels
- Back wall panel
- Front door panel sections



STEP 4

Construct the 4 corner supports (each has x2 parts) using 13mm bolts, washers and capture nuts.



STEP 5

Install the corner support situated at the back right corner. Use the corner support plate which sits loose then bolt the corner support to the floor chassis using x2 19mm bolts, washers and captive nuts.



STEP 6

Install the back wall panel. Lift and slot into the corner support then secure in place using x3 13mm bolts, washers and captive nuts.



STEP 7

Install the second corner support (which is the back left one) and slot into position. Affix using x3 13mm bolts, washers and captive nuts.



STEP 8

Secure the back wall panel to the floor chassis by using x4 19mm bolts, washers and captive nuts.

Note: These fit at the ends of the panel and in the centre, avoid the holes without captive nuts in place.



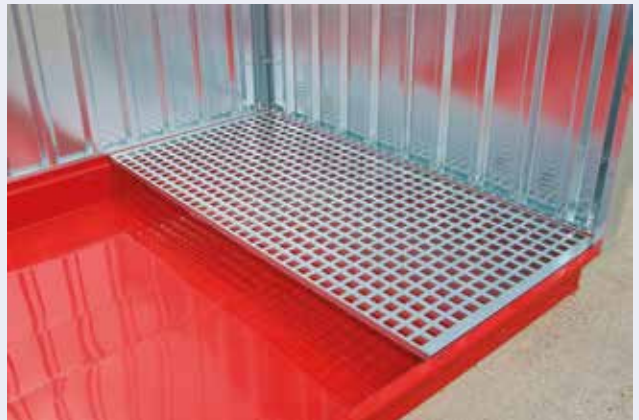
STEP 9

Install the first side panel. Lift the panel and slide in place then affix to the corner support using x3 13mm bolts, washers and captive nuts. Then affix the side panel to the floor chassis using x2 19mm bolts, washers and captive nuts.



STEP 10

Install the floor grills by lifting and sliding them into position. No fixings required.



STEP 11

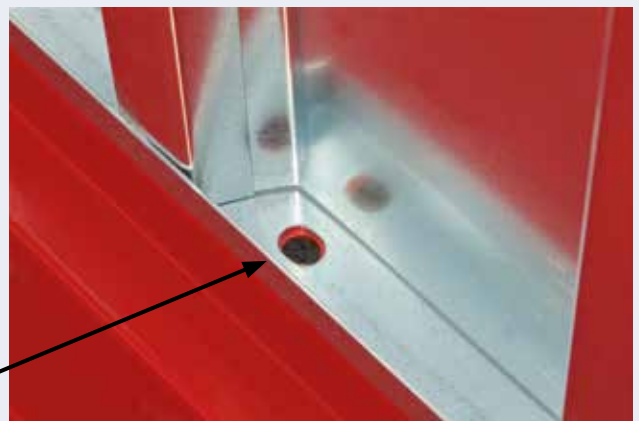
Install the second side panel by repeating the same process as Step 9.



Note: Do not fit the last corner support yet.

STEP 12

Install the front panel by sliding into position and slotting it into the corner support. Don't forget, the doors are secured for transit so someone will need to be working inside the unit. Complete assembly by affixing the front panel to the corner support using x3 13mm bolts, washers and captive nuts. Then affix the front panel to the floor chassis using x4 19mm bolts, washers and captive nuts.



Note: Avoid the holes where no captive nut is

STEP 13

Now install the remaining corner support using x3 13mm bolts, washers and captive nuts per panel. This will need to be secured from inside the unit.

TOP TIP!

Once the 4 panels are assembled and secure, insert the cylinder locks and turn to release the door.



STEP 14

Fit the x2 cylinder locks so that the key apertures face outside.

Use x1 screw and nut per lock to affix to door (using the pre-drilled holes).



STEP 15

Install the door handles by aligning them with the pre-drilled holes. Use x2 screws, washers and nuts.



STEP 16

Install the roof by lifting it in place. It will naturally slot in position over the wall panels and should be secured by using x4 13mm bolts, washers and nuts.



STEP
17

Assemble the lifting eyes and rods. Slide a metal washer then rubber washer over the collar of the lifting eye then insert stainless steel rod and screw tight. Repeat x4 times.



STEP
18

Install the lifting eyes and rods. Slide each rod through the roof section and ensure it is aligned with the holes in the floor chassis (this is easiest to achieve from inside the unit). Complete assembly by using x1 washer and nut per rod and tightening to secure.



STEP
19

Now's the time to check all the bolts are secured tightly.



Congratulations!

Your Expandachem is now fully assembled and ready to use.



expandachem

Accessories

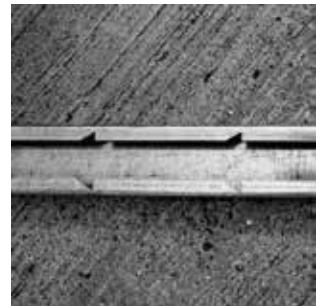
Your Expandachem is now ready for use but don't forget, we also have a wide range of handy accessories that means you can personalise your units around your own specific needs:

Storage bins

Made from galvanised aluminium, storage bins are tough and a great way to safely store a variety of items.



Shelf Uprights



Door Closer

The Ryobi door closer is of sturdy construction and easy to install. Closes door slowly and safely thanks to its hydraulic action.



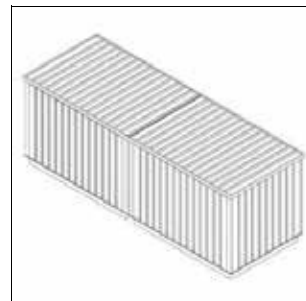
Cable Holder



Shelf Arm



Short End Linking Kit



Sump Shelf



Expandarange – The complete range of storage and accommodation solutions



Expandastore- Flat-packed storage unit



Expandacom- Flat-packed office/
accommodation unit



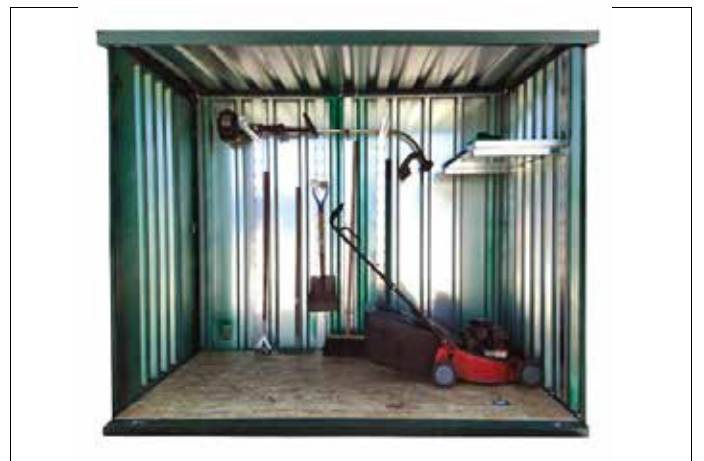
Expandakabin - Flat-packed office unit home and
commercial use.



Expandachem- Flat-packed storage unit for the
safe storage of chemicals and lubricants.



Bikestore- Flat-packed secure storage unit
for cycles, motorcycles and tools.



Gardenstore- Flat-packed secure storage unit for all
your garden equipment.

The Expandarange of flat-packed buildings is available from:

TP Structures Ltd

01743 818 366

sales@tpstructures.co.uk

www.tpstructures.co.uk