

Release 1.0
Cabin, man-portable, self assembly type



EXPANDACOM

assembly instructions



- 1) Place the pack onto firm, level ground



- 2) Remove the four packing posts using a 19mm spanner. (**Fig. 2 & 3**)



- 3) Remove the four bolts on the corners of the unit using a 13mm spanner. (**Fig. 4**)



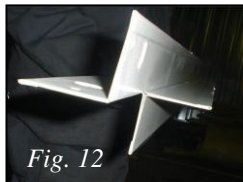
- 4) Remove the roof fascia cover on both sides (**Fig. 5 & 6**)



- 5) Remove the roof connector (4 x 13mm bolts) (**Fig. 7 & 8**)



- 6) Remove the roof sections and the timber packing. Remove the corner packing posts, take all components out of the pack to leave you with a clear chassis to work on. (**Fig. 9, 10 & 11**)



- 7) Fit one inner corner profile (**Fig. 12**) to the chassis as shown using 19mm bolts & washers. Then fit one outer corner to the chassis as shown using 19mm bolts & washers (**Fig. 13**)



- 8) Remove the plastic film from all panels. (**Fig. 14**)
9) Starting with the short side, slot a narrow wall panel into the corner post slot (cut side toward post). Then two full panels (door, blank panels) as required.



- 10) Fit another internal and external corner post.
11) Fit panels as before. Continue until all four walls are fitted (**Fig. 15, 16 & 17**)



- 12) Fit the ceiling retention bars. (**Fig. 18**)
13) These fit on the top of the wall panels and slot into the top of each corner post. (**Fig 19 & 20**).

NOTE: If the pins do not line up with the holes the cabin is not level.





Fig. 21

- 14) Fit the ceiling panels. **(Fig. 21)**
- 15) These fit on the top of the retention bars and slot together like the wall panels



Fig. 22

- 16) Slide on the roof panels. Take care to ensure the lip locates correctly where the two halves connect. **(Fig. 22 & 23).**

- 17) Fit the centre roof cap with 13mm bolts & washers. **(Fig. 24 & 25).**



Fig. 23



Fig. 24



Fig. 25



Fig. 26

- 18) Fit the roof fascia to both long sides. **(Fig. 26).**



Fig. 26

- 19) Fit the bolts into the four corners. **(Fig.26).**

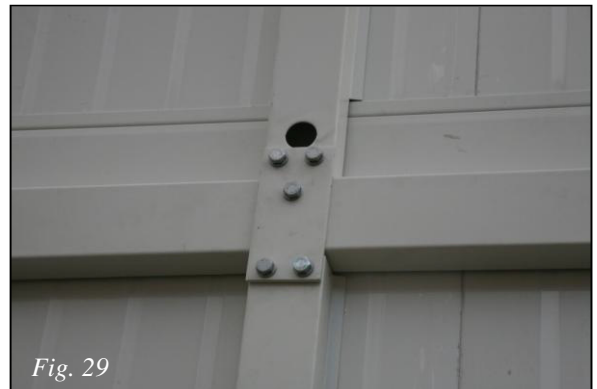
Congratulations you have completed your cabin!



Lifting Kit (Optional)

The lifting kit simply bolts onto the side of the Expandacom as shown.

To stack one on top of the other, simply substitute the lifting eyes (**Fig. 28**) for the connection brackets (**Fig. 29**) as shown to provide secure stacking.



Thank you for purchasing this unique building.

Expandacom can be linked together to form a modular building by using a simple linking kit.
Also available: window guards, electric packs, forklift tunnels and replacement panels.
Contact your dealer for more information.