

expandastore

Linking Kit Assembly Instructions

SUITABLE FOR SIDE LINKING KITS AND END LINKING KITS



expandastore

Linking Kit Assembly Instructions

SUITABLE FOR SIDE LINKING KITS AND END LINKING KITS

General assembly instructions

- Read instructions thoroughly before commencing assembly
- For best results assemble on level, solid ground or it may affect alignment of the wall and ceiling panels
- On initial assembly, hand tighten all nuts and bolts then once full assembly has been completed, tighten again with socket/spanner
- Keep all components and packaging if you plan to demount, move and reassemble in new location

The tools you will need

- 13mm spanner
- 19mm spanner
- Socket set including 13mm and 19mm sockets
- Screw driver

Safety notes

Please review all safety implications before commencing installation including suitability of desired location, local hazards, access and personnel involved in assembly. If in any doubt refer to your company's Health & Safety officer or seek professional advice. Due care should be taken when lifting, assembling and demounting the unit.

General notes after assembly

- Once assembled, the unit can be lifted and re-positioned using a fork lift or crane
- For demounting and relocating in flat-pack condition, using the original packaging is recommended

Terms explained

- Capture nuts – This refers to nuts that are pre-attached to the component.
 - Chassis – The main floor component
 - Hand tighten – Tightened by hand so secure to hold in place but loose enough to allow for small movement
 - Demounted – When the unit is disassembled and returned to its original flat-packed state
-

Assembly Instructions

This linking kit is suitable for linking all sizes of Expandastore range of units. For illustrative purposes, the images show 2 Expandastore 3m units being linked end to end.

Please refer to the instruction manual for each unit prior to commencing assembly.

NOTE: These instructions describe 2 units being linked when they have been constructed. However, in some instances, it may be easier to assemble the first unit (omitting the wall panel where it will be linked) then positioning the floor chassis of the second unit in place. Installation of the linking kit can then be carried out and the wall panels for the second unit can be installed afterwards.

Either way, the following instructions will describe assembly of the linking kit.

STEP 1

Assemble the first unit to the point where 3 walls and all the corner supports are in position, referring to the assembly instructions.

STEP 2

Install the wall linking panels. The bottom of the panel will slot into place against the wall of the first unit. Affix by using x3 13mm bolts, washers and nuts – HAND TIGHTEN ONLY.

Repeat the process for both sides.



STEP
3

Manoeuvre the chassis for the second unit in position, adjacent to the first unit. Ideally there should be a gap of 95mm between to two units. You can gauge this by using the bottom of the side linking panel which should fit snugly between the 2 units.

STEP
4

Construct the remaining walls of the second unit, referring to the assembly manual (but omitting the wall panel where the units join).



STEP
5

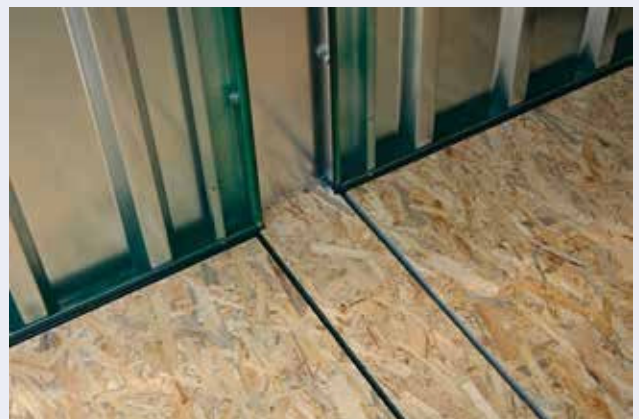
Secure the wall panel linking section to the floor chassis of both units. Use x3 13mm bolts, washers and captive nuts each end – HAND TIGHTEN ONLY.

Repeat the process for both sides.
For end to end only. Side to side requires no fixing to floor.



STEP
6

Install the wooden floor linking plate. This will slot into place and require no fixings.



STEP
7

Complete the assembly of the roof panels and unit, referring to the assembly instructions.

STEP
8

Slot the metal roof linking cover in place – no fixings required.

REMEMBER – Once the 2 units are complete, tighten the bolts holding the side linking units in place.



Expandarange – The complete range of storage and accommodation solutions



Expandastore- Flat-packed storage unit



Expandacom- Flat-packed office/
accommodation unit



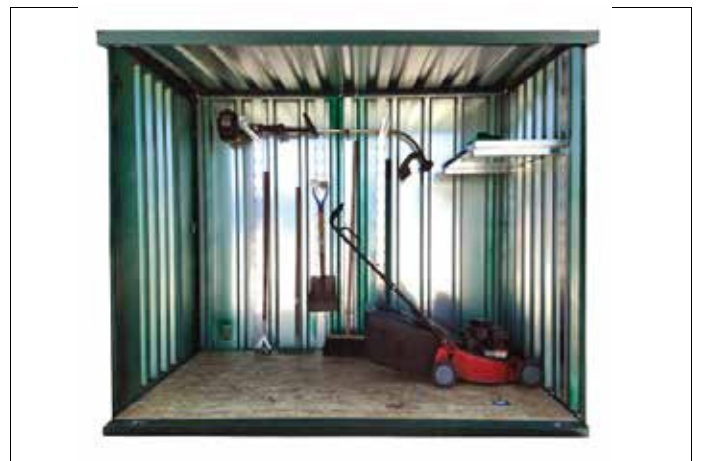
Expandakabin - Flat-packed office unit home and
commercial use.



Expandachem- Flat-packed storage unit for the
safe storage of chemicals and lubricants.



Bikestore- Flat-packed secure storage unit
for cycles, motorcycles and tools.



Gardenstore- Flat-packed secure storage unit for all
your garden equipment.

The Expandarange of flat-packed buildings is available from:

TP Structures Ltd

01743 818 366

sales@tpstructures.co.uk

www.tpstructures.co.uk